



**MISSION CRITICAL** Software®  
EMPOWERING PUBLIC SAFETY

[www.MissionCriticalSWAT.com](http://www.MissionCriticalSWAT.com) 3620 West 10<sup>th</sup> Street, Greeley, CO 80634-1821 P: (970) 797-9218 (888) 400-396

---

## Deployment Documentation for:



**MISSION CRITICAL** SWAT®  
MOBILIZING TACTICAL OPERATIONS

[www.MissionCriticalSWAT.com](http://www.MissionCriticalSWAT.com)

**Mission Critical Software, Inc.**

[www.MissionCriticalSWAT.com](http://www.MissionCriticalSWAT.com)

3620 W 10<sup>th</sup> Street, Suite B-204

Greeley, CO 80634-1821

(970) 797-9218

(888) 400-3964

[Contact@MissionCriticalSWAT.com](mailto:Contact@MissionCriticalSWAT.com)



## Deployment of Mission Critical SWAT Instructions

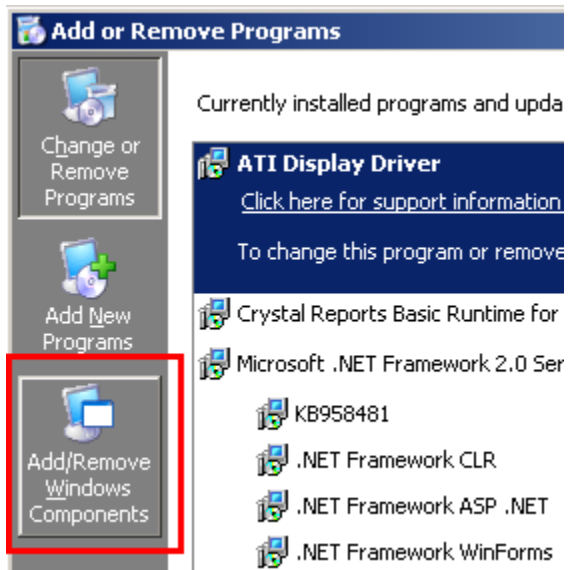
### Software Prerequisites & Hosting Server

**Note:** All additional files are included on the disk in the *Prereq* folder

- Windows Hosting (Server 2003, Server 2008, Windows XP, or Windows Vista – *Not supported on x64 (64 bit) systems*)
- Install **all** Windows updates (it may need to run several times to receive them all)
- IIS 6 or IIS7 (this document will use IIS6)
- .Net Framework 3.5 Service Pack 1 (dotnetfx35setupSP1.exe)
- Windows Installer 4.5 (WindowsServer2003-KB926139-v2-x86-ENU.exe)
- Microsoft SQL Server 2008 Express (SQLEXPADV\_x86\_ENU.exe)
- Install SQL Reporting Services
- SQL Mixed Mode Authentication
- Crystal Report 2008 Support (CrystalReportsRedist2008\_x86.msi)
- Visual J Redistributable (MSVisualJRedistributable.exe)

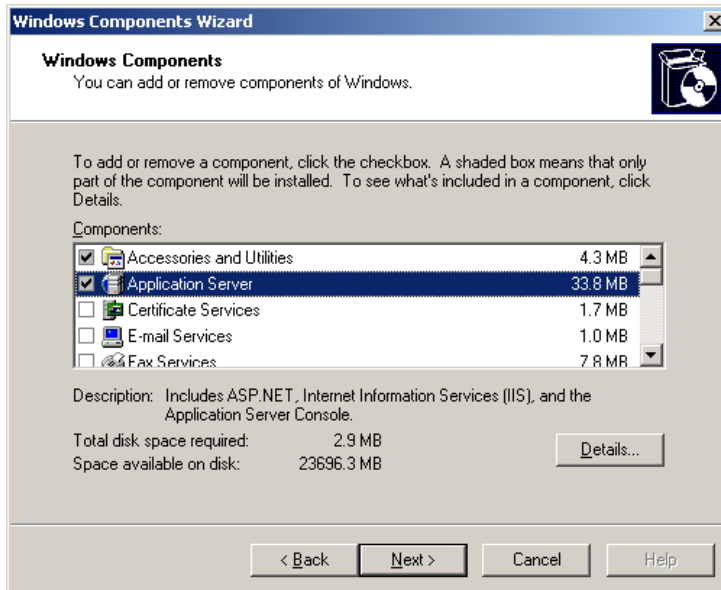
### Setup Procedures

- 1) Install IIS 6 (*IIS7* instructions follow IIS 6) – go to Control Panel & select/open “Add or Remove Programs”
- 2) Select the “Add/Remove Windows Components”

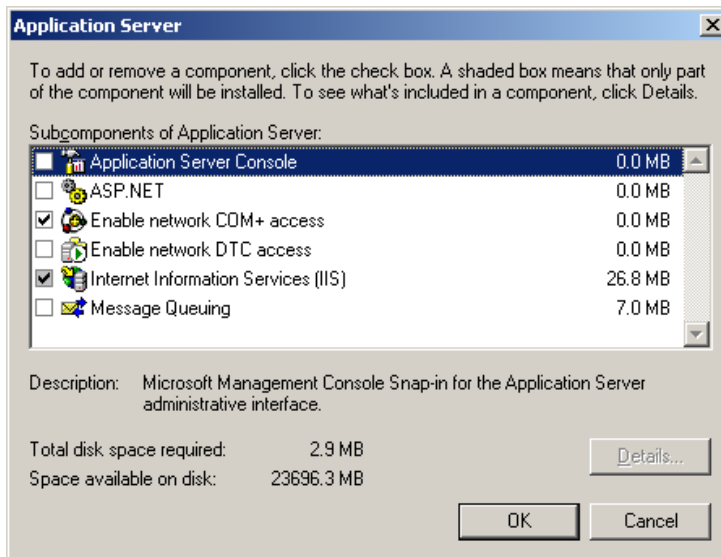




3) Select “Application Server” and select “Details”



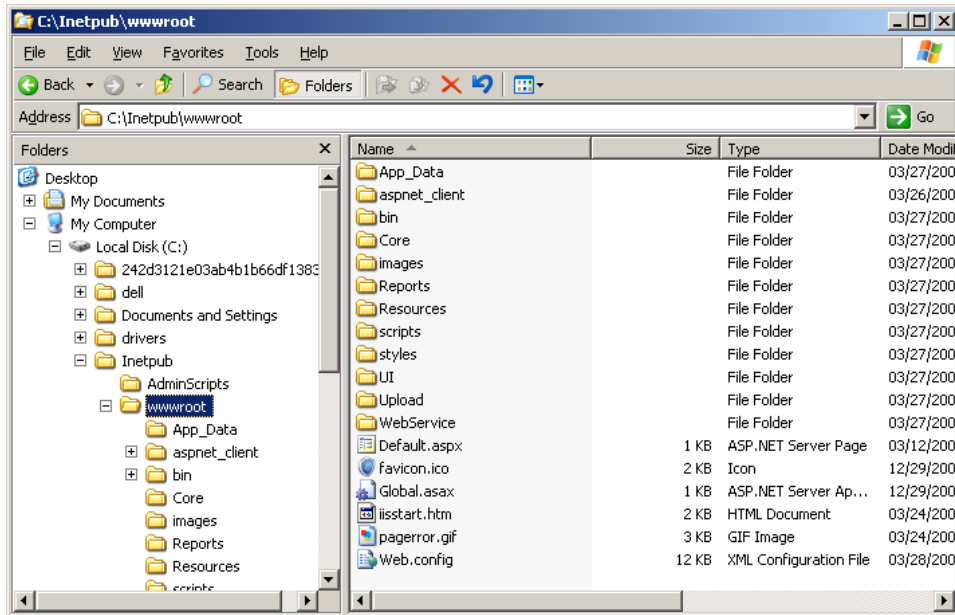
4) Select “Internet Information Services (IIS)” & click OK



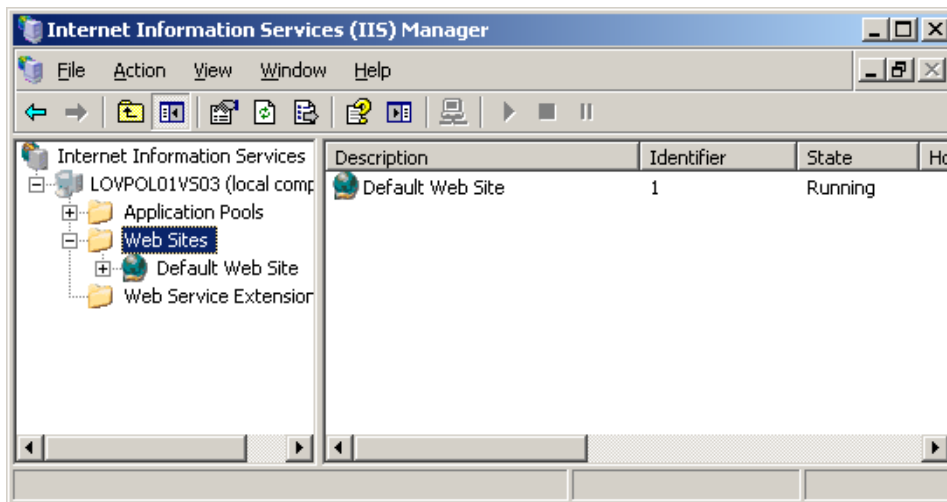
5) Copy the contents of the *Publish* folder (from the disk) to C:\inetpub\wwwroot (or wherever your virtual directory location will be located). Note: this location is only available after IIS is



installed.



6) Open IIS & right-click on the *Default Web Site* or create a new website





7) Enter your server's IP address (highlighted in BLUE)

Default Web Site Properties

Directory Security | HTTP Headers | Custom Errors | ASP.NET  
Web Site | Performance | ISAPI Filters | Home Directory | Documents

Web site identification

Description: Default Web Site

IP address: Server IP Advanced...

TCP port: 80 SSL port:

Connections

Connection timeout: 120 seconds

Enable HTTP Keep-Alives

Enable logging

Active log format: W3C Extended Log File Format Properties...

OK Cancel Apply Help

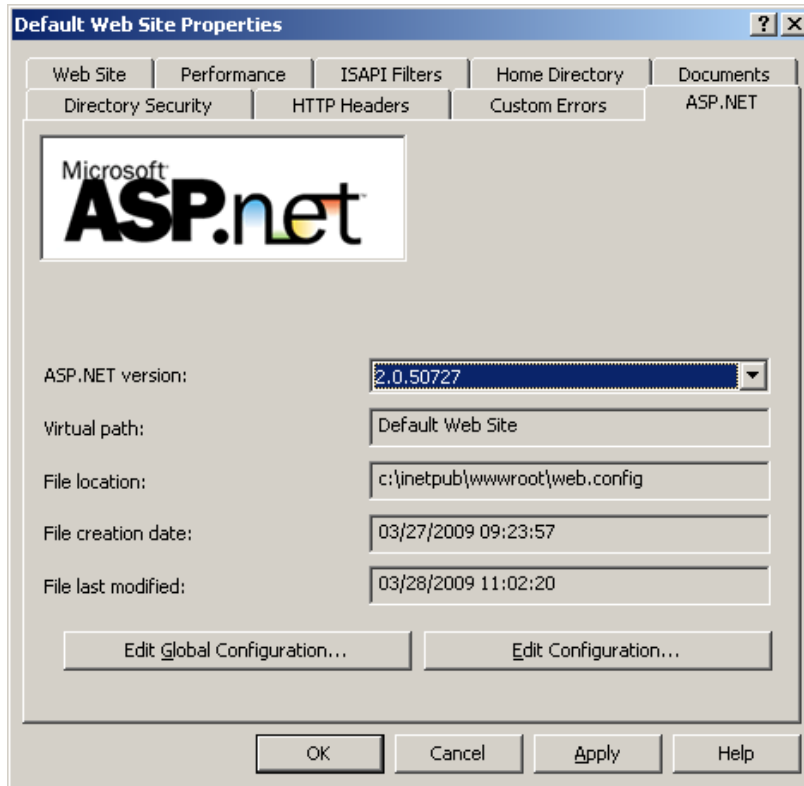


- 8) Select your *Local Path* by *Browsing* to the location: `c:\inetpub\wwwroot`. Duplicate the checkbox selections & name the application *MCSWAT*

The screenshot shows the 'Default Web Site Properties' dialog box with the 'Home Directory' tab selected. The 'Local path' is set to 'c:\inetpub\wwwroot'. Under 'Permissions', 'Read', 'Write', 'Log visits', and 'Index this resource' are checked. Under 'Application settings', the 'Application name' is 'MCSWAT'. The 'Starting point' is '<Default Web Site>', 'Execute permissions' is 'Scripts only', and 'Application pool' is 'DefaultAppPool'. Buttons for 'Browse...', 'Remove', 'Configuration...', and 'Unload' are visible.

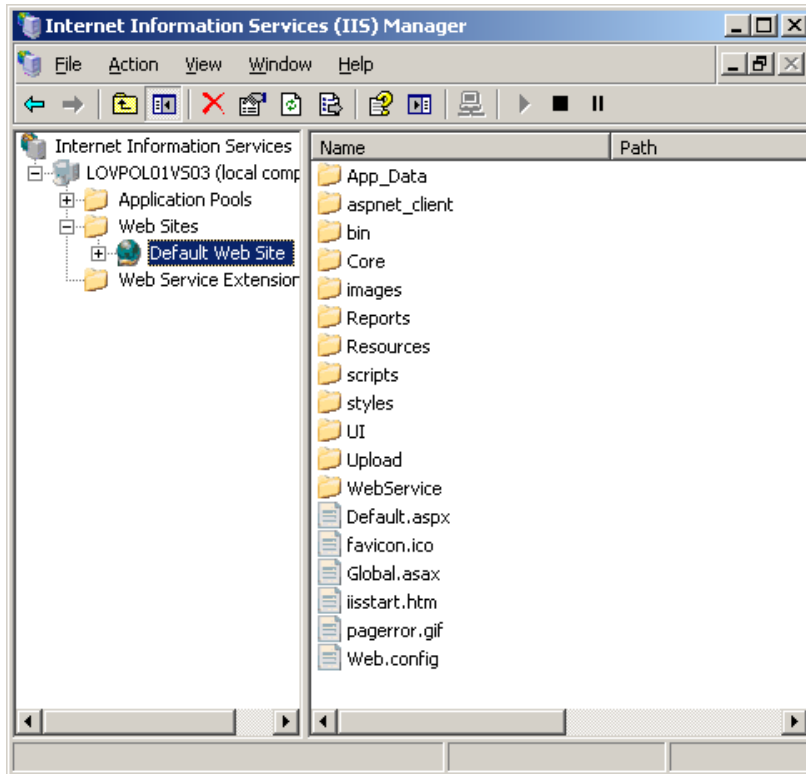


- 9) Go to the ASP.NET tab and select the ASP.NET version: 2.0.50727

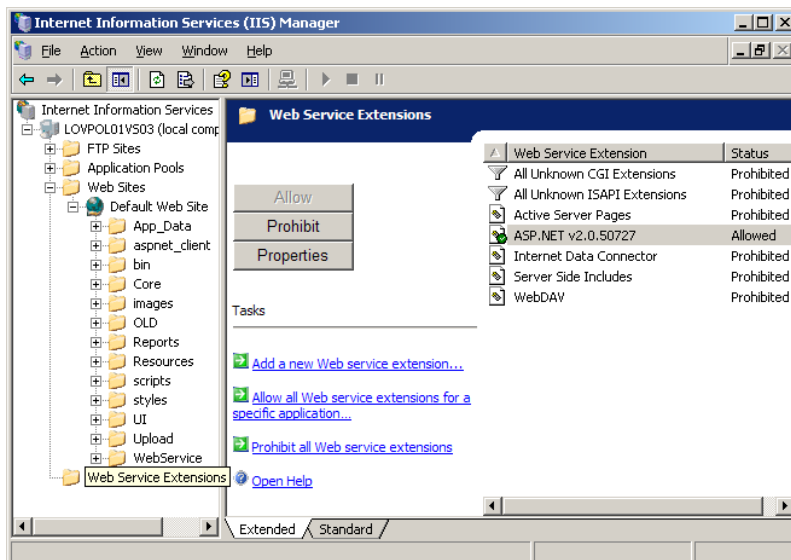




10) Your IIS screen should now show the following



11) Click on *Web Service Extensions* & allow "ASP.NET 2.0". If it is not present please add it by clicking the "Add a new Web service extension" link and add the following path:  
C:\Windows\Microsoft.Net\Framework\v2.0.50727\aspnet\_isapi.dell

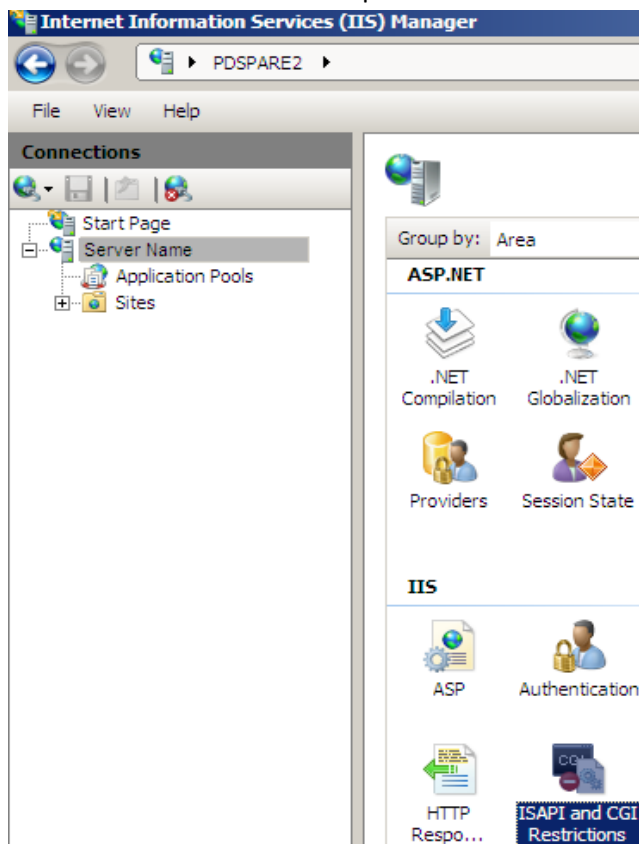


12) To install *IIS 7*: Add IIS Services in Server Manager & **Roles** for Server 2008

13) The following services must be select when installing IIS 7:

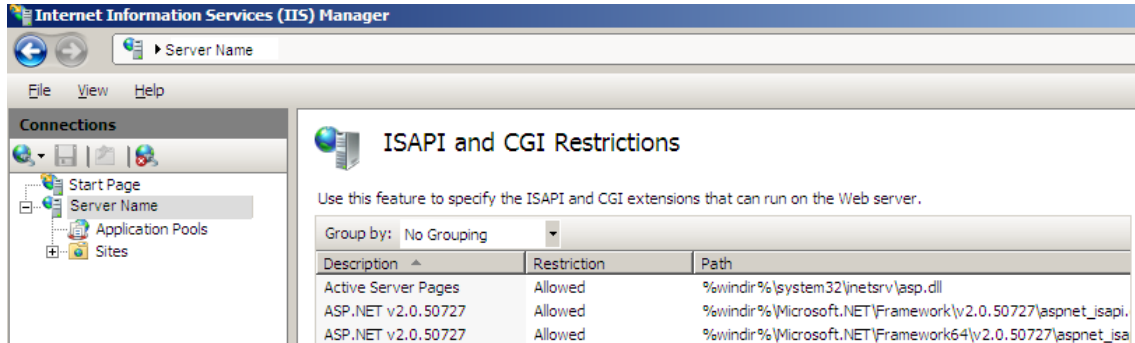


- i) Static Content
  - ii) Default Document
  - iii) Directory Browsing
  - iv) HTTP Errors
  - v) ASP.NET
  - vi) .NET Extensibility
  - vii) ASP
  - viii) ISAPI Extensions
  - ix) ISAPI Filters
  - x) HTTP Logging
  - xi) Request Monitor
  - xii) Request Filtering
  - xiii) Static Content
  - xiv) IIS Management Console
- 14) Open up the IIS Manager and Select the “Server Name” and right-click on “ISAPI and CGI Restrictions”. Then select “Open Feature”.

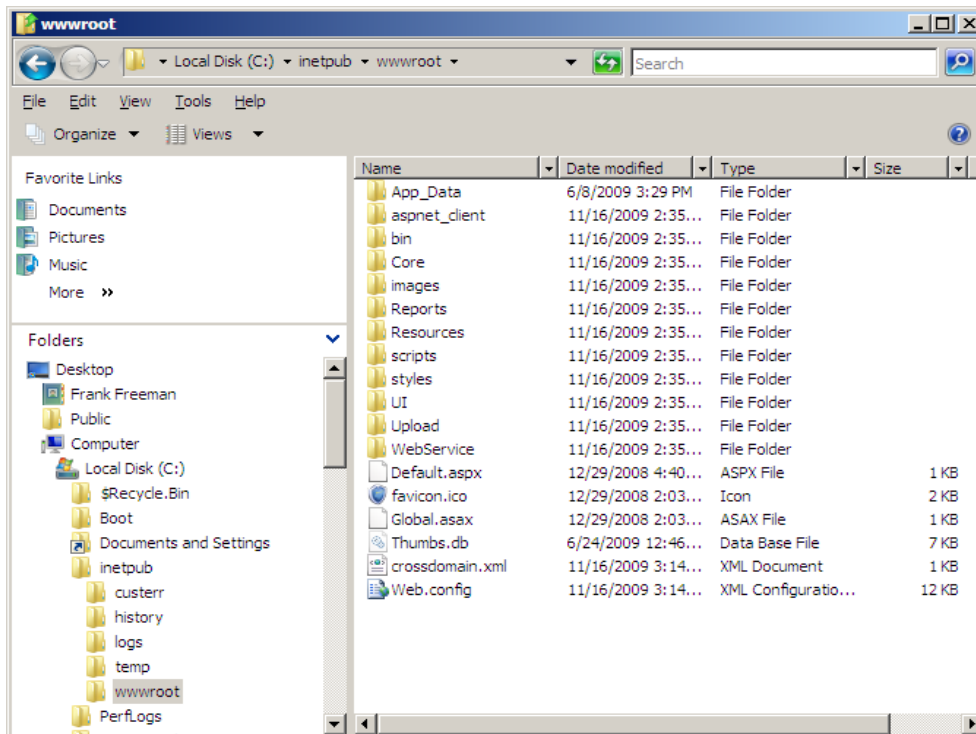




- 15) Confirm that the Web Service Extensions are activated with the Restriction set to “Allowed”

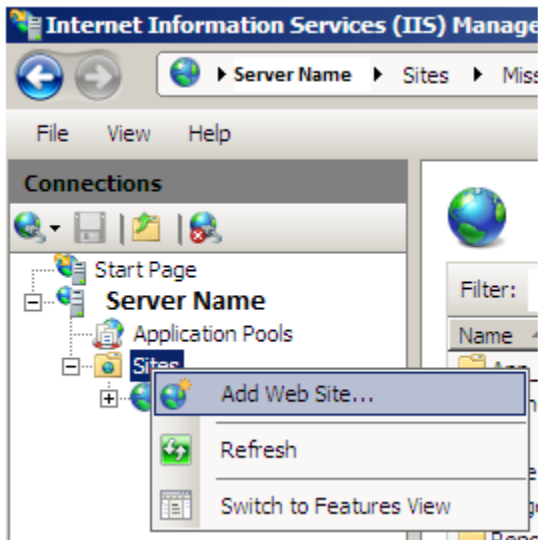


- 16) Copy the contents of the *Publish* folder (from the disk) to C:\InetPub\wwwroot (or wherever your virtual directory location will be located). Note: this location is only available after IIS is installed.





- 17) In IIS Manager, delete the “**Default Site**”. Right-click the “**Sites**” folder and select “**Add Web Site...**”



- 18) Complete the screen below and click the **Select** button

**Add Web Site**

Site name:  Application pool:

Content Directory

Physical path:

Pass-through authentication

Binding

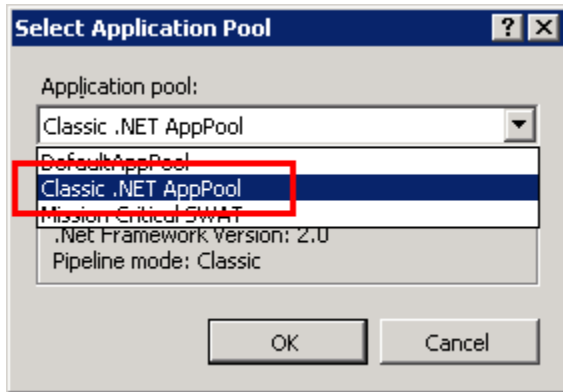
Type:  IP address:  Port:

Host name:   
Example: www.contoso.com or marketing.contoso.com

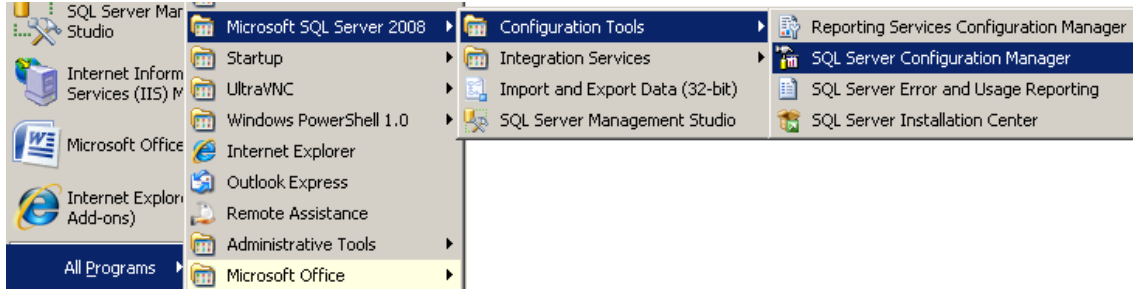
Start Web site immediately



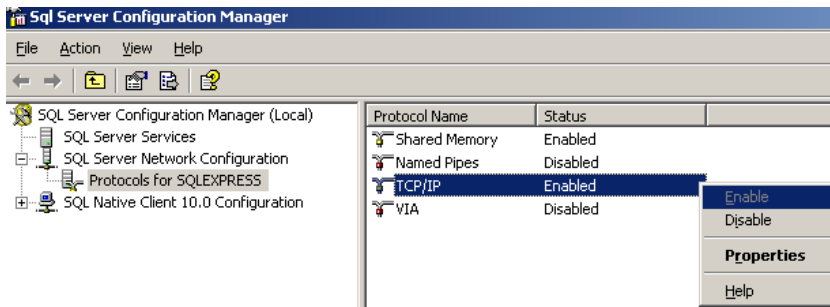
19) Select the **Classic .NET AppPool** for the list



20) Next you'll need to allow remote TCP/IP connections to SQL

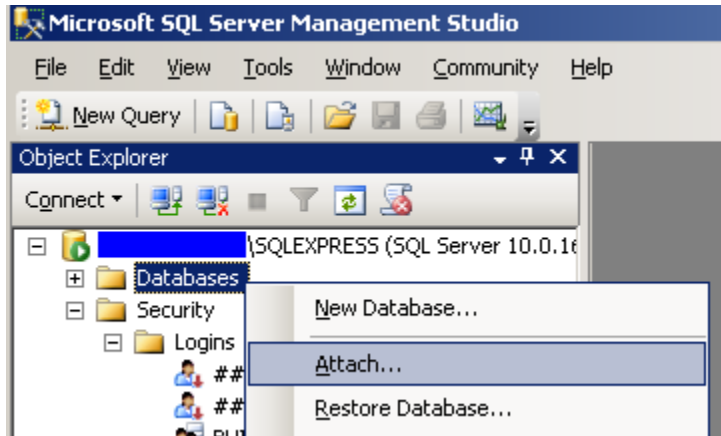


Click the "Protocols for SQLExpress" (or the name of your connection) and right-click on the "TCP/IP" item and select "Enable"

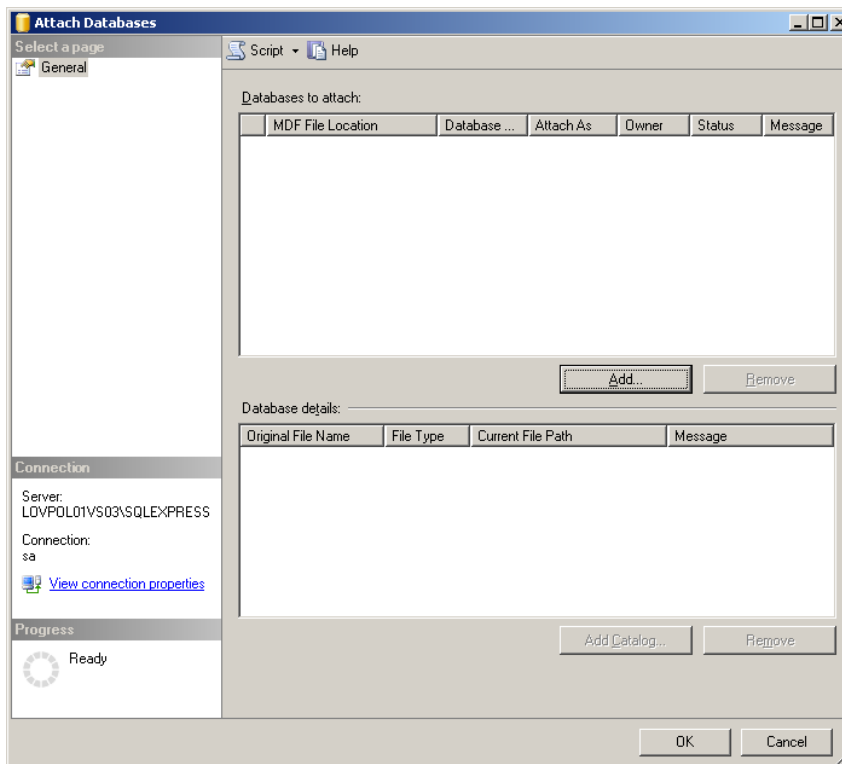




- 21) In Microsoft SQL Server Management Studio 2008, right-click on the “Databases” folder & select “Attach”

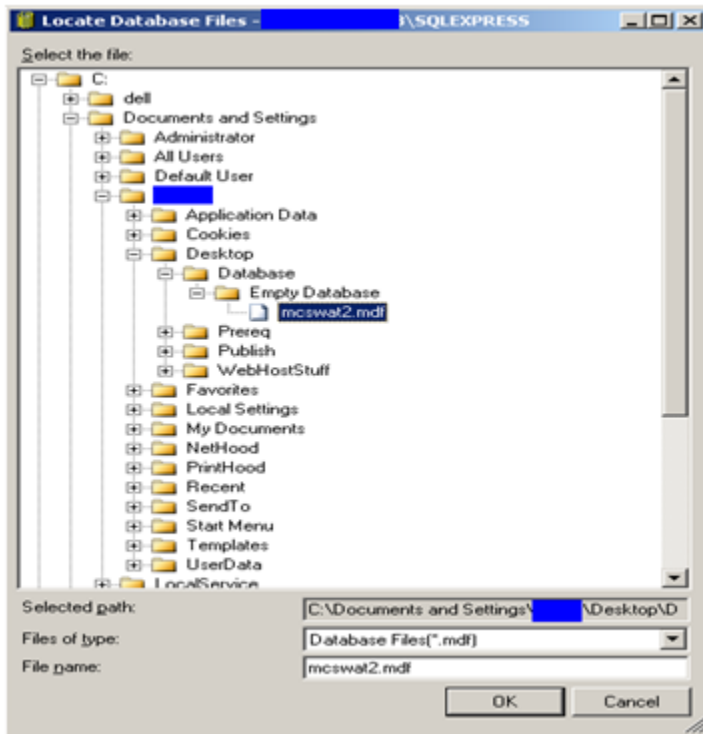


- 22) You'll see the following screen. Click the “Add” button to attach a database

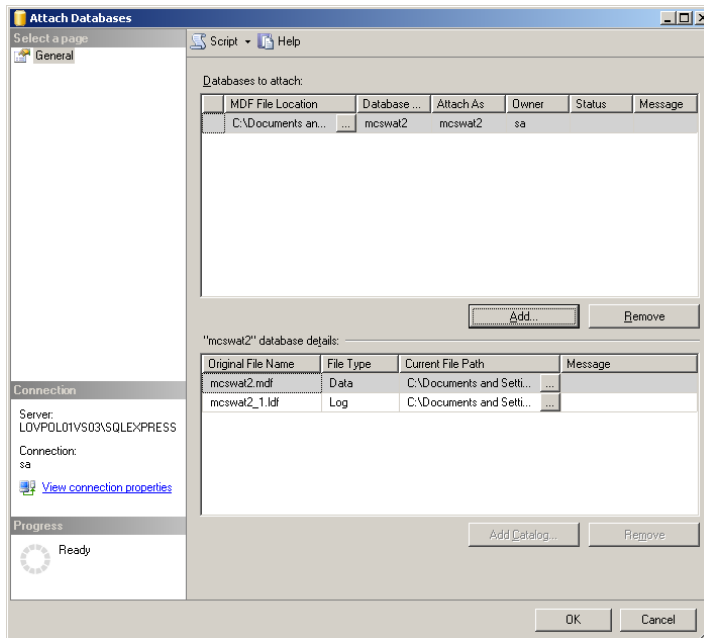




- 23) Open your install disk and navigate to the “Database” folder & select “Empty Database”. Then click the “mcswat2.mdf” database and click “OK”

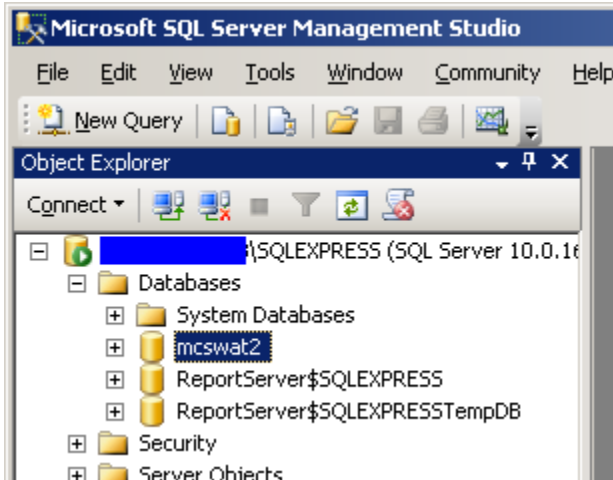


- 24) You will now see the following screen. Click “OK”

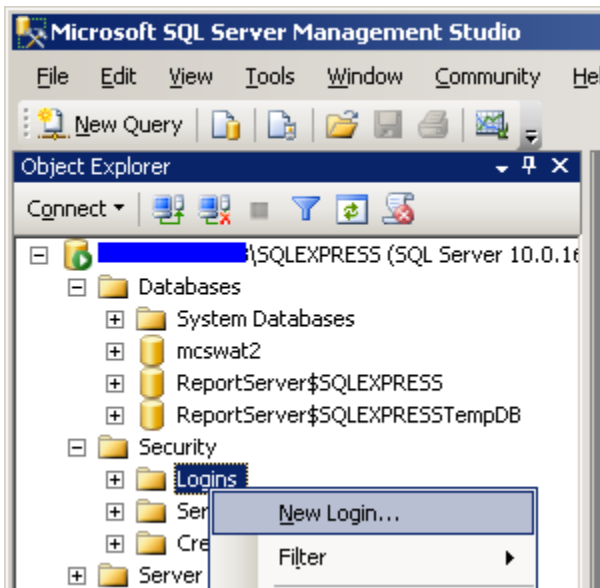




25) Once Attached, you will see the following databases appear

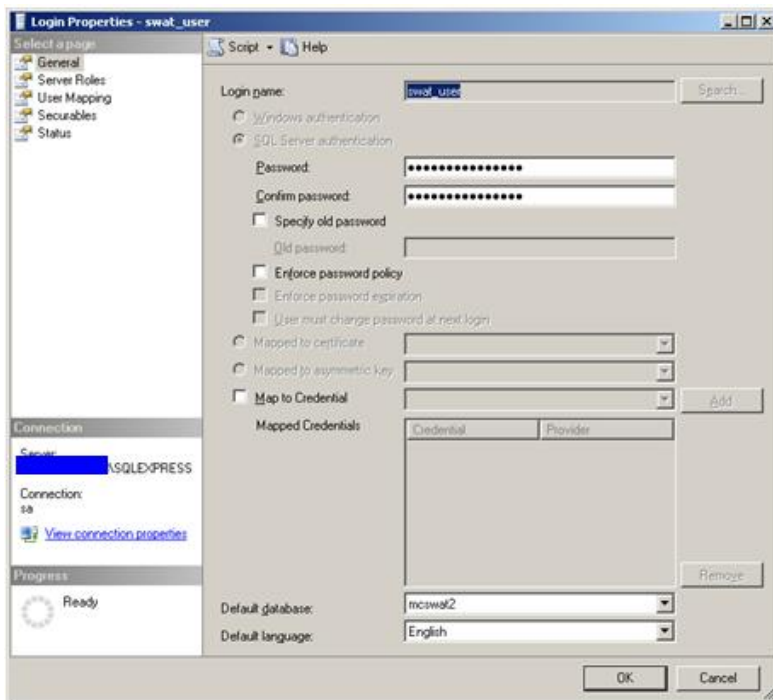


26) Now, go to the Security folder and open it. Right-click on the “Logins” folder and select “New Login...”

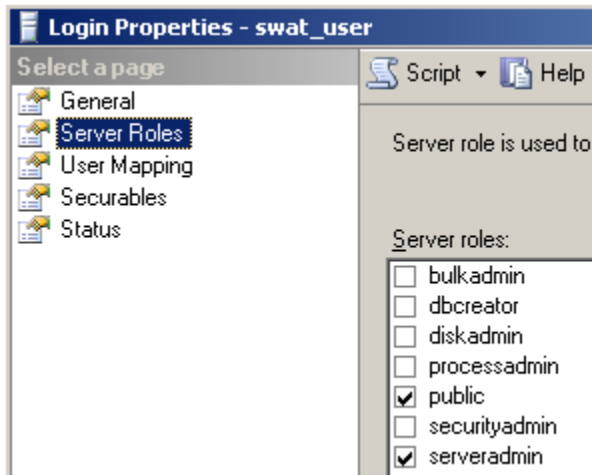


27) Duplicate the settings shown here in the General tab:

- Login name: swat\_user
- Password: swat\_pass
- Confirm password: swat\_pass
- Unselect the “Enforce password policy”
- Select the Default Database of: “mcswat2”
- Use the “English” language

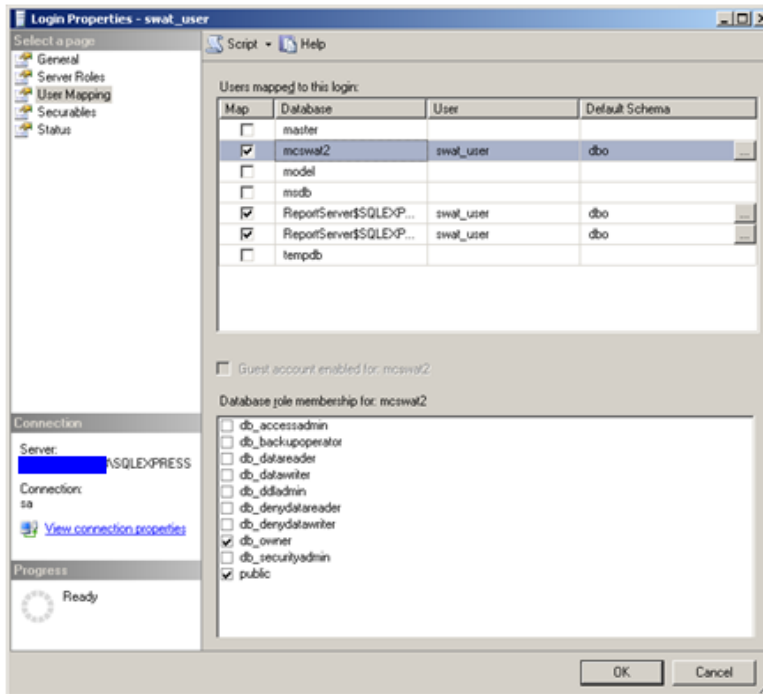


28) In the Server Roles menu choose: “public” & “serveradmin”

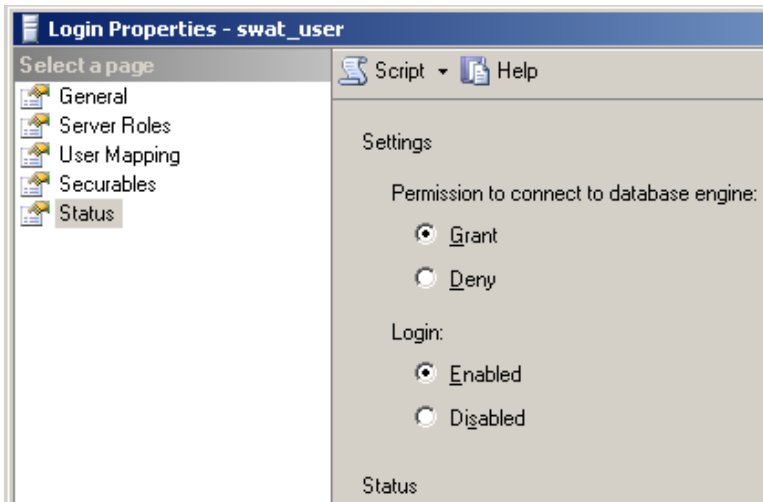




- 29) Select the User Mapping menu. On the right select the three boxes that are checked and for each of them, choose “public” & “db\_owner”

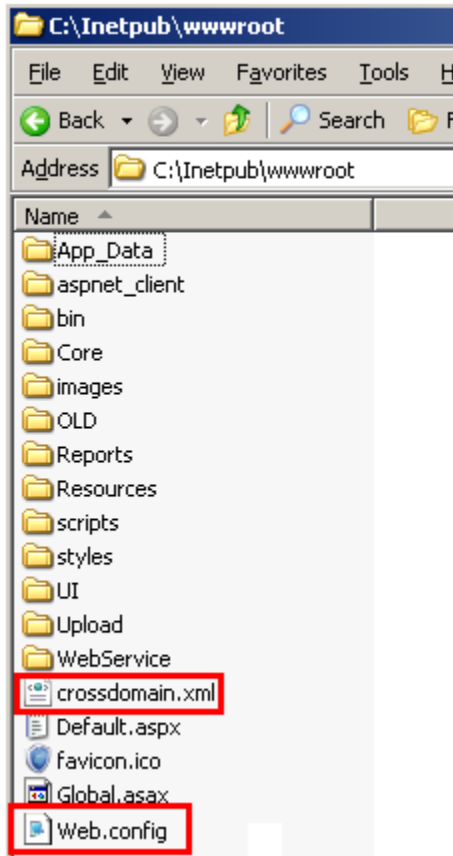


- 30) Copy the following under the Status menu





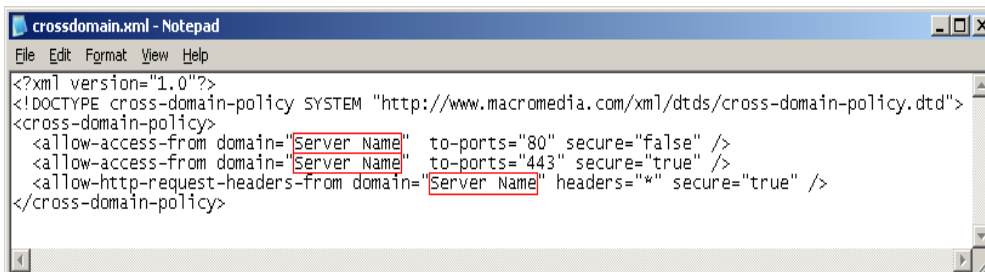
31) In the C:\Inetpub\wwwroot folder (or the location of your web)



32) Right-click “crossdomain.xml” and select Open With and “Notepad”



33) In the Blue areas, please insert your server/host’s IP address

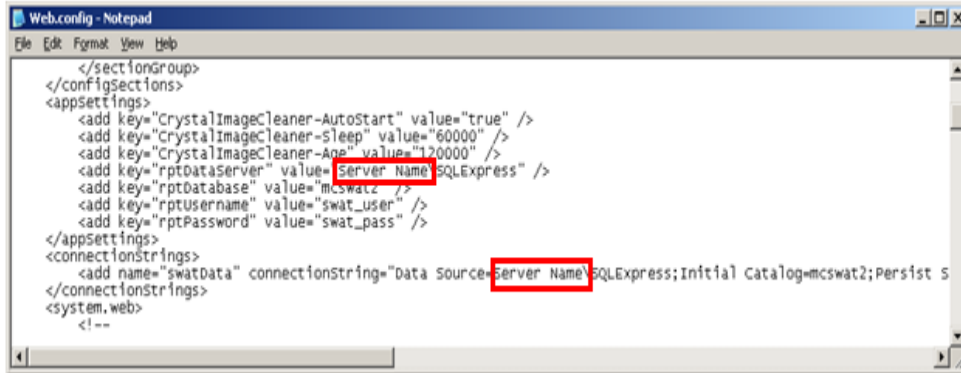




34) Do the same to open the “web.config” file

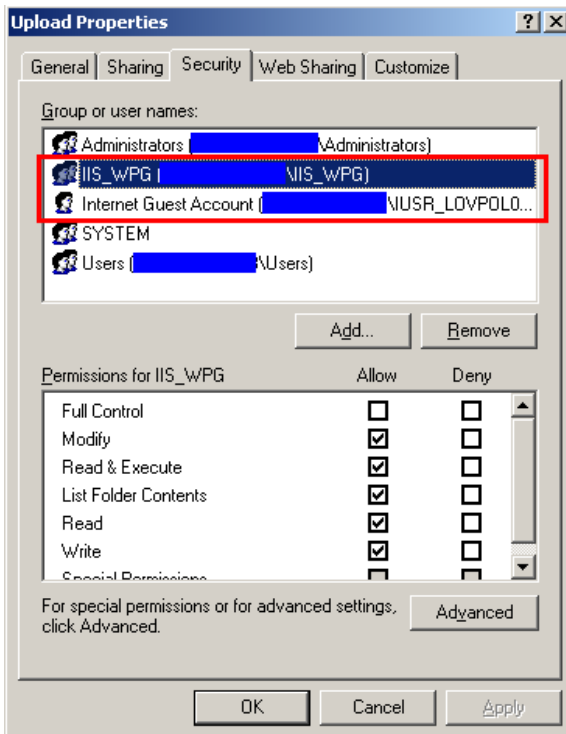


Change the “Server Name” locations to your current Server/Host’s name



35) Now, change the security on the C:\inetpub\wwwroot\Upload folder

- Provide Modify rights to the IIS\_WPG group
- Provide Modify rights to the Internet Guest Account user
- For *IIS 7*, please us IIS\_IUSRS & IUSR

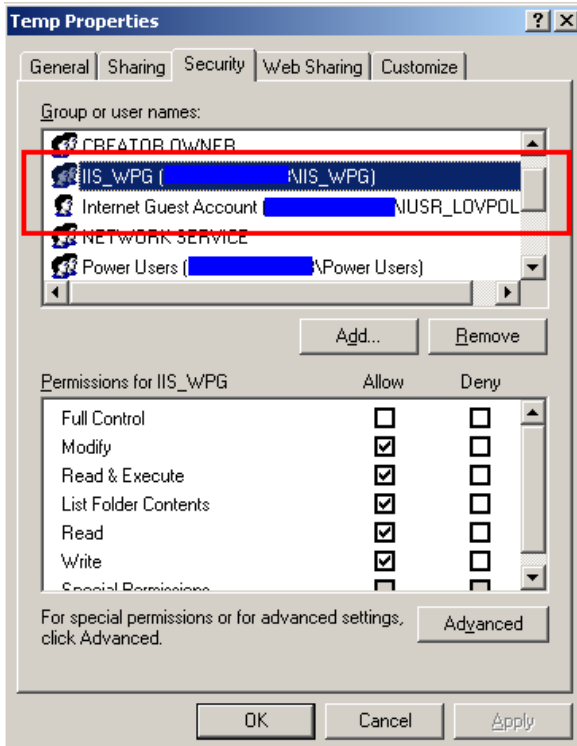


36) Change the security on the C:\Windows\Temp folder

- Provide Modify rights to the IIS\_WPG group

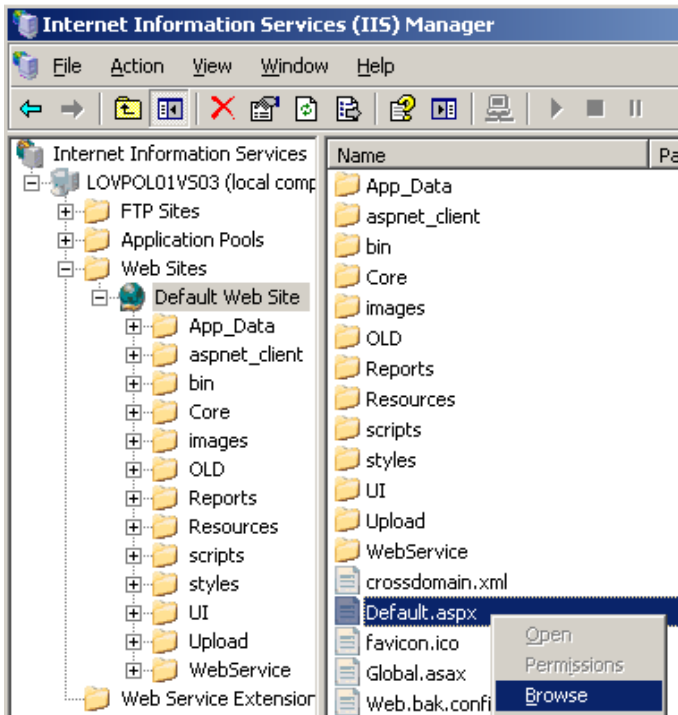


- Provide Modify rights to the Internet Guest Account user





37) Now test your web page in IIS by doing the following: Right-click “Default.aspx” and select Browse



38) The following page should now appear

- For administration & testing purposes, please use the following account:
  - Username: **admin**
  - Password: **pass**





39) Note: In order to use the “Make File” option in Strategy Builder Animator for a client machine, you must add the web site as a trusted Local Intranet Site. The best way to do this is to copy and paste the address of your web login page here

